

Please read and follow the instructions carefully. You may also scan the QR code below to view the operation video:



Scan the QR code to download the app

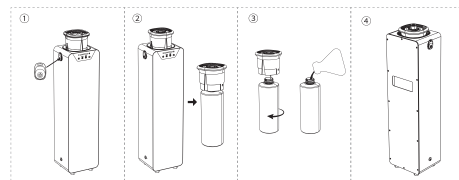
Equipment Operation Video

Equipment after-sales Video

PRODUCT INFORMATION		
Size: 154x130x568mm	Weight: 4.6Kg	Power: 11W
Input: DC 12V/2A	Capacity: 1000ml	Coverage: 1500-3000m ³

1 INSTALLATION

Attach the magnetic key to the magnetic lock mark on the left side of the device to unlock the atomizer head, then take out the entire atomizer head. Next, unscrew the essential oil bottle in the direction of the arrow, add an amount of essential oil, and then reassemble them back into the device.

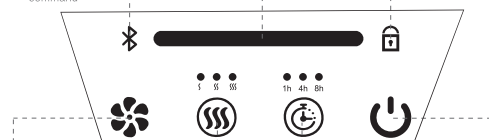


WARNING: After adding essential oil, the device must always be kept upright and facing upwards. It should not be inverted or tilted, as this may damage the internal components of the device.

2 BUTTON CONTROL

◆ Light & Button

- ◆ **Bluetooth Light**
 - Blue light on: Bluetooth mode on
 - Blue light off: Bluetooth mode off
 - Blue light flashes three times: Bluetooth receives control command
- ◆ **Essential Oil Level Light**
 - Green light: High level
 - Yellow light: Medium level
 - Red light: Low level
- ◆ **Lock Button/Light**
 - Long press 5s: Button lock/unlock
 - Blue light on: Locked
 - Blue light off: Unlocked



- ◆ **Concentration Level Button/Light**
 - Tap to cycle through levels 1/2/3 in tap mode.
 - Level 1: On for 50s, off for 200s, one light on
 - Level 2: On for 100s, off for 200s, two lights on
 - Level 3: On for 150s, off for 200s, three lights on
- ◆ **Timer Level Button/Light**
 - Tap to cycle through levels 1/2/3 in tap mode.
 - Level 1: 4-hour timer, one blue light on
 - Level 2: 8-hour timer, two blue lights on
 - Level 3: 12-hour timer, three blue lights on
- ◆ **Tap: Turn fan on/off**
 - Blue light on: Fan on
 - Blue light off: Fan off
- ◆ **Long press 5s: Reset to factory settings**
 - **Factory settings: Level 2 (on for 100s, off for 200s), 8-hour timer
- ◆ **Power Button/Light**
 - Tap: Run/Standby
 - Standby: Red light on
 - Running: Blue light on
 - Long press 2s: Switch control mode

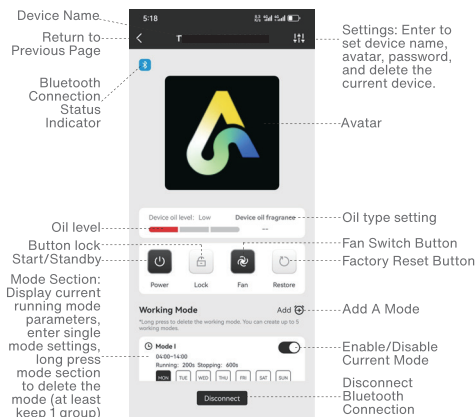
◆ Sound prompt

The device emits a "beep" upon any valid button operation.
Bluetooth connection or data reception: the buzzer will beep three times.

◆ Factory - set parameters

Level 2, 100 seconds on, 200 seconds off, operating for 8h.

3 APP CONTROL (BLUETOOTH MODE)



After Bluetooth connection, the device immediately switches to Bluetooth mode and operates according to the Bluetooth settings:

Scan the QR code with your phone to download and install the "Art Diffuser" APP → Go to the page → Select "Start Adding" → Go to the "Search and Connect" page, search for and connect to the device.

Note: It is recommended to allow all APP permissions, including location services, Bluetooth connection, and sending notifications.

◆ **All devices** | Available devices within the phone's Bluetooth range are displayed in the "All Devices" group, click on any device icon to connect to that device, after successful connection, it will jump to the device details page.

◆ **My Devices** | Devices that have been connected are displayed in the

"My Devices" group, devices not currently within Bluetooth range are shown in gray.

◆ Device Status Page:

○ **Toggle:** The phone can turn the device's operating status on/off with one click.

🔒 **Button's lock:** Turn on/off the button's lock.

🌀 **Fan:** Turn on/off the fan.

🔄 **Factory Reset:** The phone can reset to factory settings with one click.

◆ Working Mode

Click "Add" to create up to 5 working modes, click the switch button in the upper right corner of the mode window to turn the mode on/off, long press the mode window to select delete mode, click the mode window to customize and edit days of the week, time periods, and frequency.

-**Day Setting** | Select the desired days.

-**Time Period Setting** | Adjust the dial to select the working time period.

Note: If the time period needs to cross 00:00, it must be set as two consecutive time periods (the end time cannot be less than the start time), for example, 23:00~02:00, set as two groups: 23:00~23:59, 00:00~02:00.

-**Frequency Setting** | Adjust the dial to select the working frequency.

4 CONCENTRATION & CONSUMPTION

Grade	On time(s)	Pause time(s)	Consumption (g/h)
Minimum concentration	5s	600s	0.09
Medium concentration	50s	200s	2.17
Maximum concentration	150s	200s	4.66
100% Text	Continuous On	0	10.87

Note: The data is for reference only. The amount of mist produced by different essential oils may vary. The data above is based on the essential oil used in the test: Park Hyatt (density ≥ 0.95).

Scent diffusers require regular cleaning and maintenance every 1-2 months when in normal use. Below is the method for cleaning.

◆ Spray nozzle cleaning

* Use 95% "alcohol + cotton swab" to gently wipe the nozzle, removing the residue of essential oil liquefaction

* Cleaning the atomizer core can be cleaned by soaking a cotton swab in 95% alcohol and wiping the core with it, or by soaking the atomizer core in alcohol and then allowing it to dry.

◆ Oil bottle cleaning

* Before changing essential oils each time, clean the oil bottle with alcohol and allow it to dry completely.

When equipment is not used for a long period, it is necessary to clean the internal nozzles and other components thoroughly.

* Add 95% industrial alcohol to the empty bottle.

* Turn on the device and run it for 10-15 minutes.

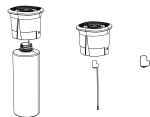
* Turn off the device, pour out the alcohol from the bottle and let it dry before reassembling the device.

* Power off storage, unplug the power supply, to prevent electrostatic damage to the circuit.

◆ The atomizer head assembly consists of the atomizer head, atomizer assembly (Atomizer core, filter Mesh, and oil suction tube), and essential oil bottle.

◆ Operation steps: First, unscrew the essential oil bottle, wipe the essential oil clean with a dry cloth, use a clamping tool such as tweezers to remove the old atomizer core, replace it with a new one, then reassemble all components into the device.

◆ **Hint:** Please note that all components must be tightened to prevent them from falling off.



◆ Replacement/Maintenance is guaranteed for one year from the date of purchase.

If you need to replace components for free within the warranty period, the device must be under normal use conditions and the failure must be due to manufacturing reasons to provide warranty. During the warranty period, component fees covered by the warranty are waived. This warranty does not include consumables such as oil. To obtain warranty service, please be sure to contact the after-sales department during the warranty period and present the original or copy of the valid warranty card and the official commercial invoice to the relevant departments.

◆ The following situations do not enjoy free warranty service:

- ① Damage & problems caused by Accidents & Fire!
- ② Not used properly and wrong operation.
- ③ Repaired by non-professionals, causing some parts damaged.
- ④ Damaged during transportation.
- ⑤ Without our warranty card.
- ⑥ Without proper cleaning for a long time.
- ⑦ The machine is overworked.
- ⑧ Machines & Parts not from us.
- ⑨ Machines not purchased from official channels.
- ⑩ Send the machines back without permit from the manufacturer.

WHAT'S INCLUDED

Scent Diffuser (with bottle) x1	Power adapter x1	Gasket x1	Atomizer core x1	Magnetic key x1	After-sales card x1	User Manual x1



SAFETY PRECAUTIONS FOR USE

◆ Safe use

① After loading the essential oil, the device must always remain upright and facing upwards, not inverted or tilted, otherwise it may damage the internal components of the device.

② During the transportation of the equipment, it is necessary to empty the essential oils from the bottles to avoid oil leakage and damage to the equipment.

③ This device cannot be used for air humidification and cannot be filled with water;

④ Please place it in a location inaccessible to children and pets.

⑤ Store in a dry and cool place, do not use this device in high temperature or humid environments.

◆ Forbidden

① Do not cover the equipment in use.

② Prohibit the use of overloaded power outlets, power cords, or damaged power plugs, as this may damage equipment or even cause fires.

③ Essential oils should not be ingested and should be kept away from contact with the eyes. In case of eye contact, rinse thoroughly with plenty of water; if there is a strong sensation, seek medical attention immediately.

④ Please do not disassemble the equipment. If any abnormalities are found in the product, please contact us promptly.

User Manual



Smart Scent Diffuser

Column Model

Scent machine



[Please read the manual carefully before use and keep it properly]